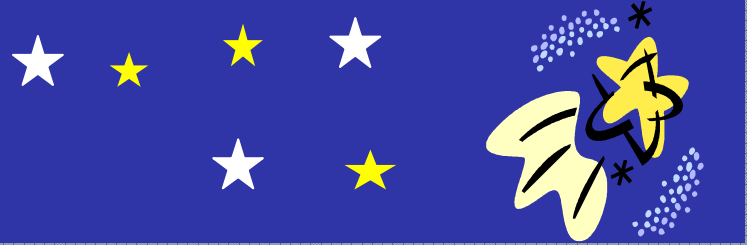


Arthur Rank Hospice Charity

Star Shine Stroll

Rules and Conditions of Entry



Registration

- You must register to enter. Each person must complete their own entry form. To be registered, your entry fee must accompany your registration form.
- You cannot register on the night.
- Places are limited and entries are strictly processed in the order we receive them.
- All children under the age of 18 must be accompanied by an adult at all times during the Star Shine Stroll. An entry form must be completed for each child and submitted at the same time as the adult entry form. The adult must sign the 'Guardian Section' of the child's entry form.
- Entries work on an individual basis so if you want to walk with friends, the best way to make sure you all secure a place is to send all of your entries in together. Please bear in mind that if an entry is incorrectly completed it will be returned and the place will not be reserved.
- Your entry fee covers all expenses i.e t-shirt, refreshments etc. it also secures your place and is non refundable.
- One cheque must be received with each completed entry form. Each person entering the Star Shine Stroll must complete an entry form and send in a cheque for their own entry. For insurance purposes please do not write a cheque for multiple entries. If you are a child's guardian please send in a separate cheque for their entry and a separate one for your entry. Please do not send cash through the post.
- On the back of the cheque please write your full name and address. If the cheque is for a child's entry please write your name and address and the child's name and address.
- The closing date for the Star Shine Stroll is Friday 25th April 2010. You can call the Fundraising Office after this date to see if there are any spaces available, but we cannot guarantee a place.
- Arthur Rank Hospice Charity reserves the right to refuse entry to the Star Shine Stroll to any person.

Cancellations

- In the unforeseeable event that the Star Shine Stroll cannot take place on Saturday 10th May every attempt will be made to rearrange the date. Refunds will only be given if the Star Shine Stroll is unavoidably cancelled by Arthur Rank Hospice Charity.
- Once you have entered the Star Shine Stroll your place cannot be transferred to another person. If you cannot attend the Walk you must contact the Fundraising Office as soon as possible and return your sponsor form to the office. For insurance purposes you cannot give your place to another person.

Medical Conditions and Health

- All entrants must take responsibility for their own health. If you have any medical conditions or have any issues about the length of the walk please consult your doctor before sending in the entry form and starting your training.
- It is advised that you have personal insurance that covers you for participating in road walking or sporting events as Arthur Rank Hospice Charity will not accept liability for public health.

- Disabled entrants are welcome to participate although due to the nature of the event we ask that you contact the Fundraising Office before sending in your entry form as the event may not be feasible for some disabilities. Please include your disability on the entry form. If a disabled person requires assistance from another person, this person must also enter for the Star Shine Stroll. Guide dogs are allowed.

Health and Safety

- Arthur Rank Hospice Charity to the extent permitted by law, exclude liability for any loss, damage, injury, consequential loss suffered by any entrant personally or to their property as result of their entry to or participation in the Star Shine Stroll.
- The event will finish late in the evening when there is limited public transport. Walkers must arrange their own transport to and from the event.
- You must stay on the designated route. Please do not cross over main roads which are not part of the route. You must listen to the guidance of safety stewards.
- No walker must pass the nominated walk leaders.

Animals and Pets

- No pets or other animals are allowed along the route except guide dogs.

Other forms of transport

- The Star Shine Stroll is a walking event – it is not a race and running or jogging is not allowed. Power walking is permitted. No other form of transport is allowed (*such as bikes, scooters and roller skates*).

Alcohol

- Alcohol must not be brought to or consumed before, during or after the Star Shine Stroll.

Other

- Please note that the Star Shine Stroll is organised by and for the benefit of Arthur Rank Hospice Charity, Cambridge. It is not linked in any way to any other walk.
- We respectfully ask all participants along with their supporters not to use aggressive or abusive language towards our organisers and volunteers.
- We respectfully ask all participants along with their supporters to be respectful of local residents whilst out on the route and not to make any excessive noise.
- We respectfully ask all participants to use the litter and recycling facilities available within the venue and around the course.

Sponsorship Money

- It is an illegal offence to use any sponsorship raised for the Star Shine Stroll to cover any expenses you incur from participating in the event.
- All sponsorship raised for the Star Shine Stroll must be passed to Arthur Rank Hospice Charity.
- Please do not bring sponsorship money with you on the night.

Acceptance of Rules and Conditions

- By signing the entry form you agree to follow the rules and conditions of the Star Shine Stroll.